


U.I. Lapp GmbH	<b>PRODUCT INFORMATION</b>	
		12.09.2012

Variable range of clamping force  
Vibration-safe module fixation  
Strain relief  
Oil resistance  
Simplified servicing due to easy assembling and disassembling



Wide clamping range



Assembly time



Optimum strain relief



Space requirement



Connector with standard housing unit



### Info

Innovative multi-cable bushing system with variable clamping ranges for high flexibility in assembling.  
When disassembling, the frame can remain on the housing and the plug-in module remains securely on the cable.

### Application range

For installation of harnessed cables  
Used in areas where cables and wires need to be safely inserted into housings  
Apparatus and switch cabinet construction  
Electronic installations  
Automation technology

### Design

The SKINTOP® CUBE system consists of the SKINTOP® CUBE FRAME and the clip modules SKINTOP® CUBE MODULE.  
For cut-outs for industrial connectors with standard defined boreholes.  
For cut-outs for 16-pin industrial connectors (36 x 86 mm)  
For cut-outs for 24-pin industrial connectors (36 x 112 mm)

### Note

SKINTOP® CUBE MODULE 20x20 BLIND can be used as a blind module and for clamping ranges 1 - 3 mm


### Included

SKINTOP® CUBE FRAME including mounting material

### Remark

Photographs are not to scale and do not represent detailed images of the respective products.

Product Management	Document: LAPP_PRO101967EN.pdf	1 / 4
--------------------	--------------------------------	-------

U.I. Lapp GmbH	<b>PRODUCT INFORMATION</b>	
		12.09.2012


**Technical Data**

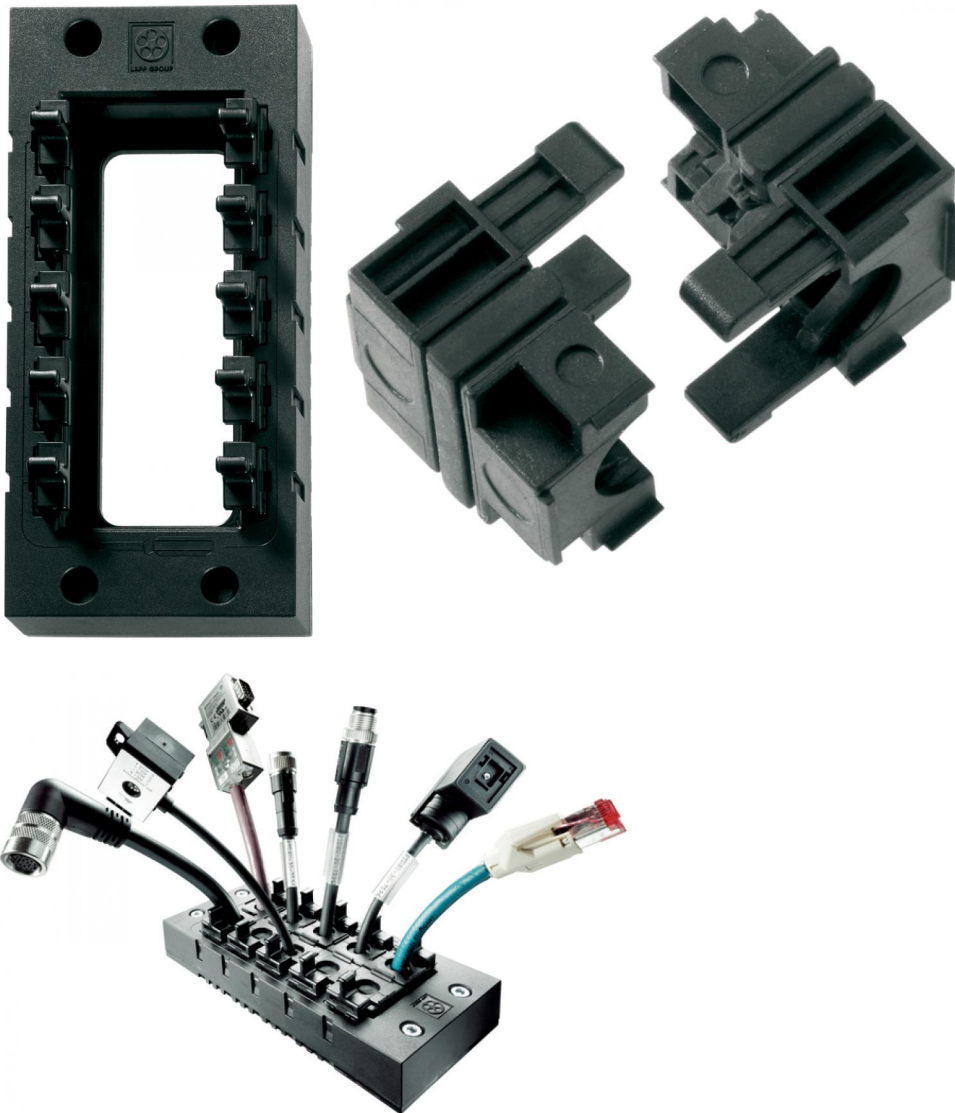
Approvals:	UL pending
Material:	Frame: glass fibre-reinforced polyamide Frame seal: CR Clip module: special polypropylene Clip module seal: LSE 2
Protection rating:	IP 64 NEMA 12
Temperature range:	-20°C to +80°C

Product Management	Document: LAPP_PRO101967EN.pdf	2 / 4
--------------------	--------------------------------	-------



Part number	Article designation / size	Clamping range ØF (mm)	Max. number of executions	Pieces / PU
SKINTOP® CUBE Frame				
52220000	SKINTOP® CUBE FRAME 16		8	1
52220001	SKINTOP® CUBE FRAME 24		10	1
SKINTOP® CUBE clip modules				
52220004	SKINTOP® CUBE MODULE 20x20 BLIND	1 - 3		5
52220002	SKINTOP® CUBE MODULE 20x20 SMALL	4 - 6		5
52220003	SKINTOP® CUBE MODULE 20x20 LARGE	6 - 9		5
52220040	SKINTOP® CUBE MODULE 20x20 AS-I BUS			5
52220005	SKINTOP® CUBE MODULE 40x40 SMALL	9 - 12		5
52220006	SKINTOP® CUBE MODULE 40x40 LARGE	12 - 16		5
52220007	SKINTOP® CUBE MODULE 40x40 BLIND			5

U.I. Lapp GmbH	PRODUCT INFORMATION	
		12.09.2012



Product Management	Document: LAPP_PRO101967EN.pdf	4 / 4
--------------------	--------------------------------	-------